

**CROSSFER** GmbH

# QUICK MACHINE TABLE CLAMP

The Compact & Easy Machine Table Clamp For Drilling or Milling Machines.  
Designed & Developed In Germany, Its Premium Quality Ensures  
Robust & Perfect Clamping.



# PowerCLAMP 100

## Machine Table Clamp



The Robust and Premium Quality Entry Level Clamp For Multiple Use. Delivering High Performance and Clamping Solutions For Various Machine Tool Tables, Milling Tables, Drilling Tables, T-Slot Press Tables, etc.

Clamping force up to	17000 N
Weighing just	1.45 kg
Clamping height	78 mm
Clamping reach	34 mm
Torque	90 Nm
LxWxH	152X40X95 mm

Designed In Germany And Made From Premium Quality Aluminum And Steel. Anti-Corrosion Electroplating On The Steel Parts. The Most Compact Design Saves Large Space. Mounting Of The Clamp Using Screws And Multipurpose Key. Made In Germany Hard-Top Case.

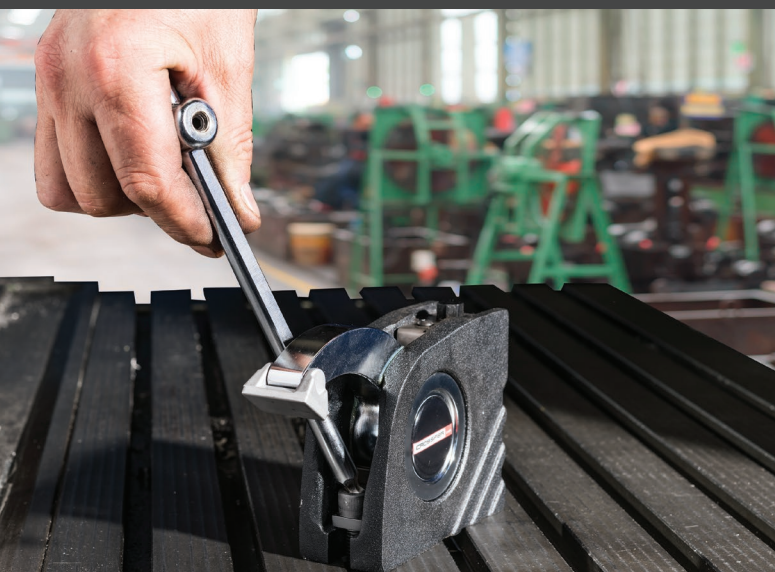
### PowerCLAMP 100

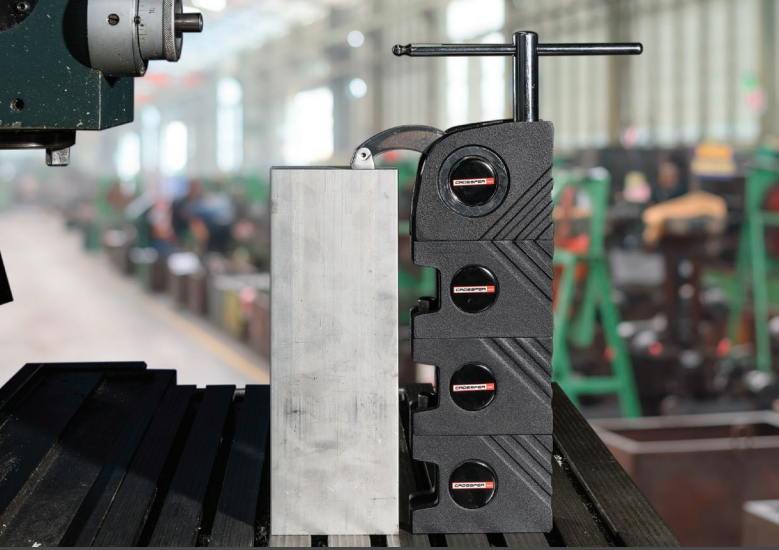
- 1 Complete Quick Machine Table Clamp Along With Standard Arm.
- 1 Multipurpose Key Used For Adjusting The Arm And The Clamping Screws.
- 3 Different Types Of Clamp Shoes. 1 Universal Flat Shoe, 1 Transverse Shoe & 1 Longitudinal Shoe.
- 3 Different Types Of T-Nuts In Size 12, 14 And 16 mm For Suitable Slots.
- 1 M8 Size Screw For The T-Nuts.
- 1 Hard-Top Carry Case With Special Foam.
- 1 User Manual.



### PowerCLAMP 100-SET

- 2 Complete Quick Machine Table Clamp Along With Standard Arm.
- 1 Multipurpose Key Used For Adjusting The Arm And The Clamping Screws.
- 2 RiserBLOCK To Increase The Height Of Clamp By 75 mm.
- 6 Types Of Clamp Shoes. 2 Universal Flat Shoe, 2 Transverse Shoe & 2 Longitudinal Shoe.
- 6 T-Nuts In Size 2 Pieces Each Of 12, 14 And 16 Mm For Suitable Slots.
- 4 M8 Size Screw For The T-Nuts And RiserBLOCK.
- 1 Hard-Top Carry Case With Special Foam.
- 1 Operating Manual With Complete Details And Spare Part List.





The Robust **RiserBLOCK 100** Is An Accessories Used For Increasing the Height Of The PowerCLAMP 100. The RiserBLOCK Assists In Increasing The Height Of The Clamp By 75 mm.

## RiserBLOCK 100

Height 75 mm  
Weight 0.5 Kg

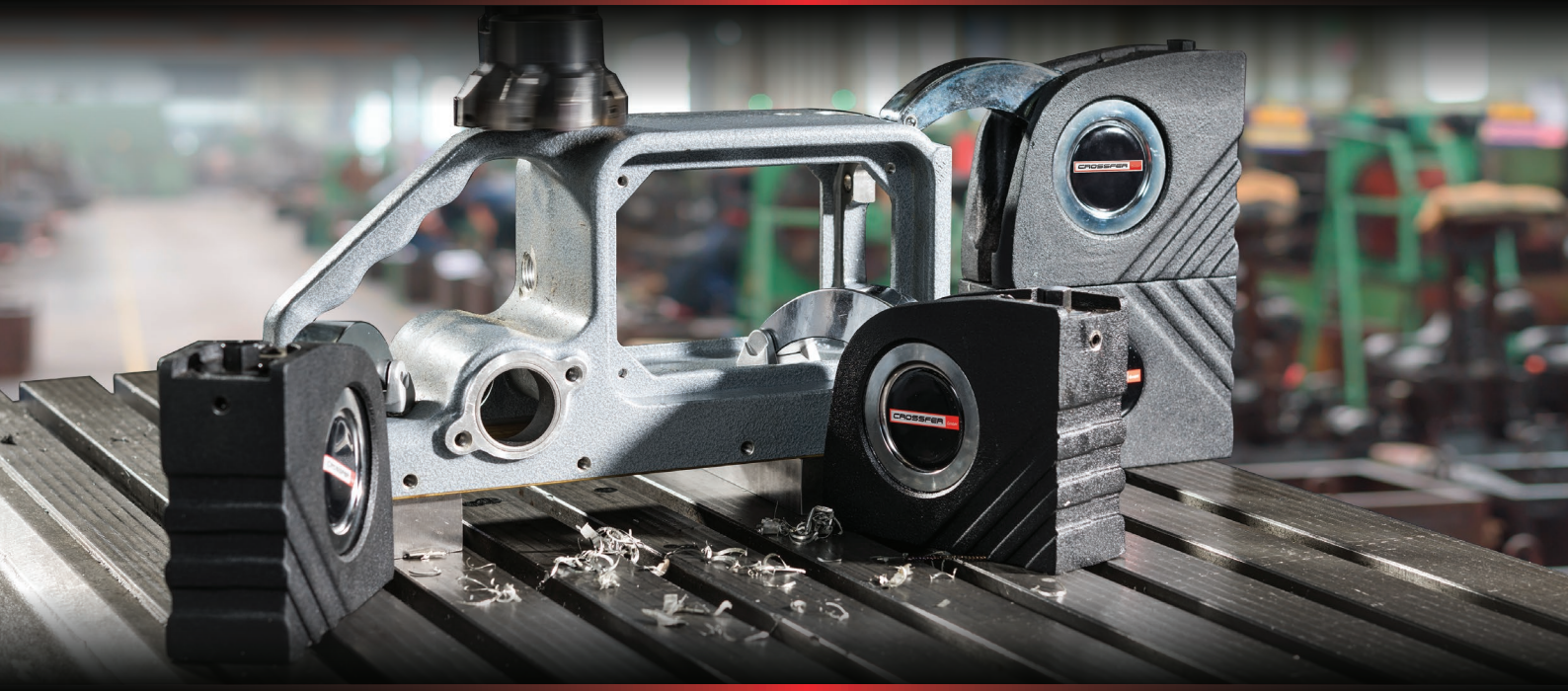


The Very Practicle Accessorie **LongARM 100** Is An Extra Arm To Elongate The Length Of The Standard Arm Of The PowerCLAMP 100.



## Long ARM 100

Increase in Clamping Reach 90 mm



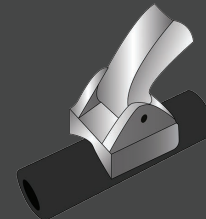
Three Different Shoe Types Delivered With Each **CROSSFER** Quick Machine Clamp



Universal Flat Shoe



Transverse Shoe



Longitudinal Shoe

**CROSSFER** GmbH

Address: CROSSFER GmbH,  
Martinstrasse 108, 41063 Mönchengladbach,  
Germany.

Phone: +49 (0) 2161 - 46 22 988

Email: [info@crossfer.de](mailto:info@crossfer.de)

Website: [www.crossfer-machineclamp.com](http://www.crossfer-machineclamp.com)  
[www.crossfer.de](http://www.crossfer.de)

Contact Details Of Our Authorized Dealer: